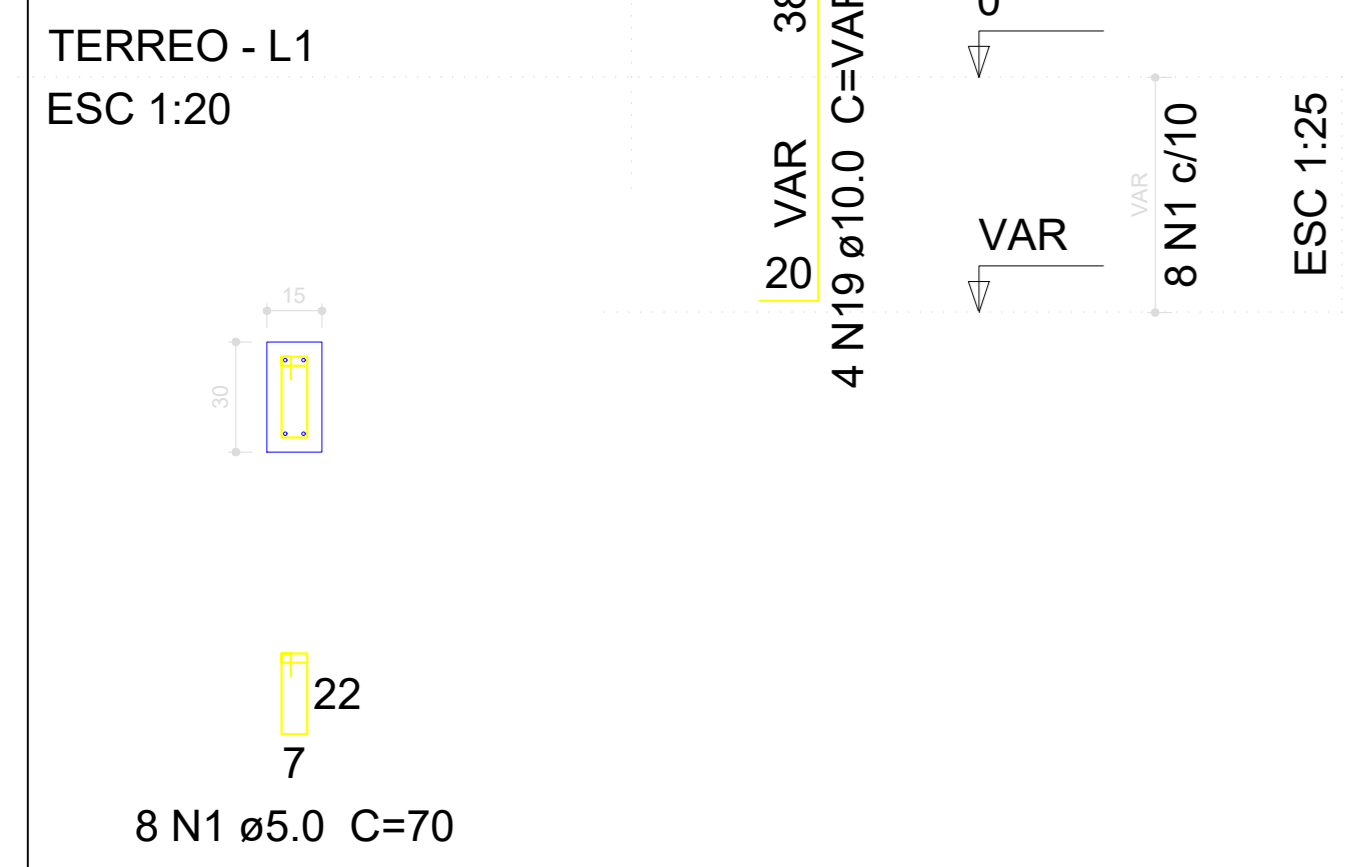
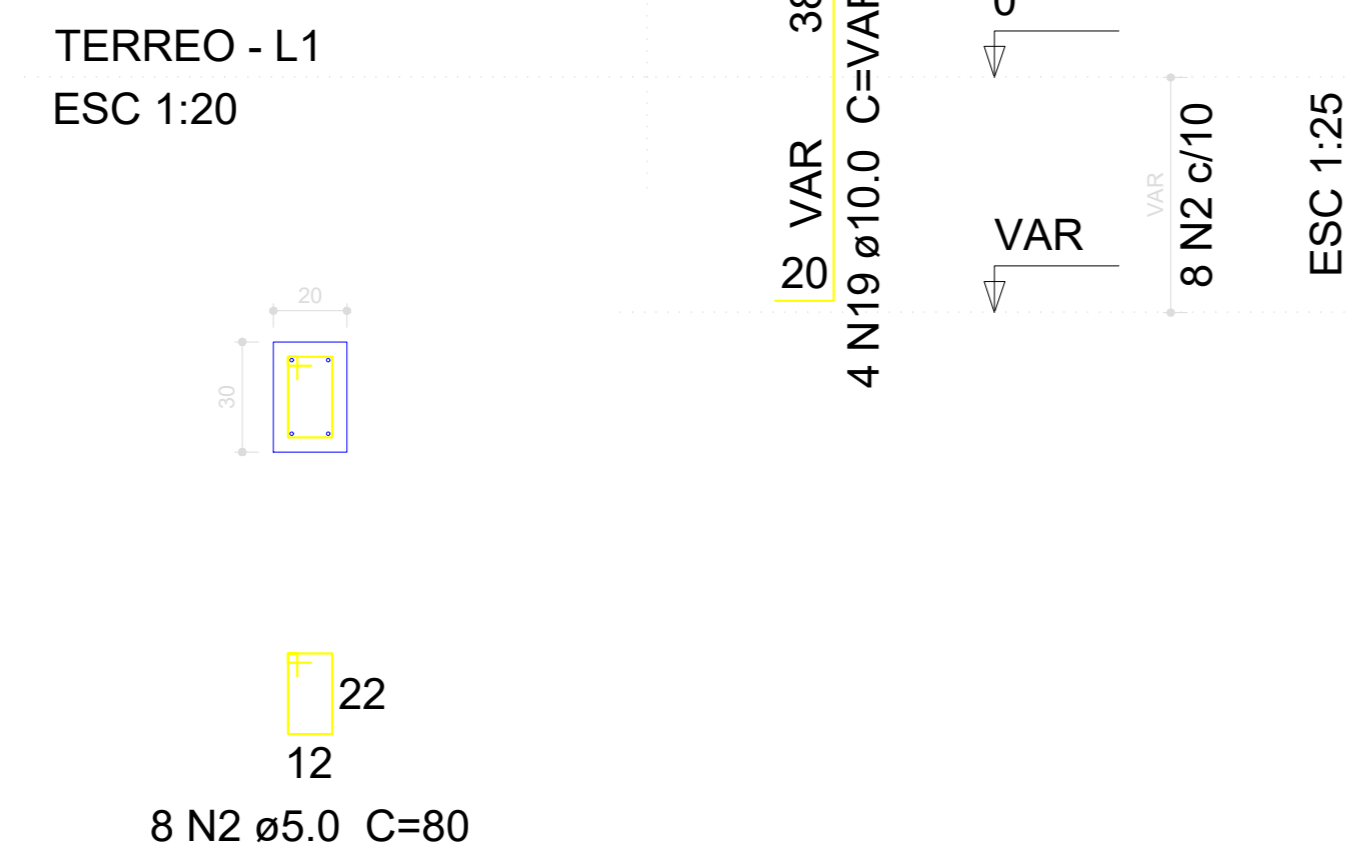


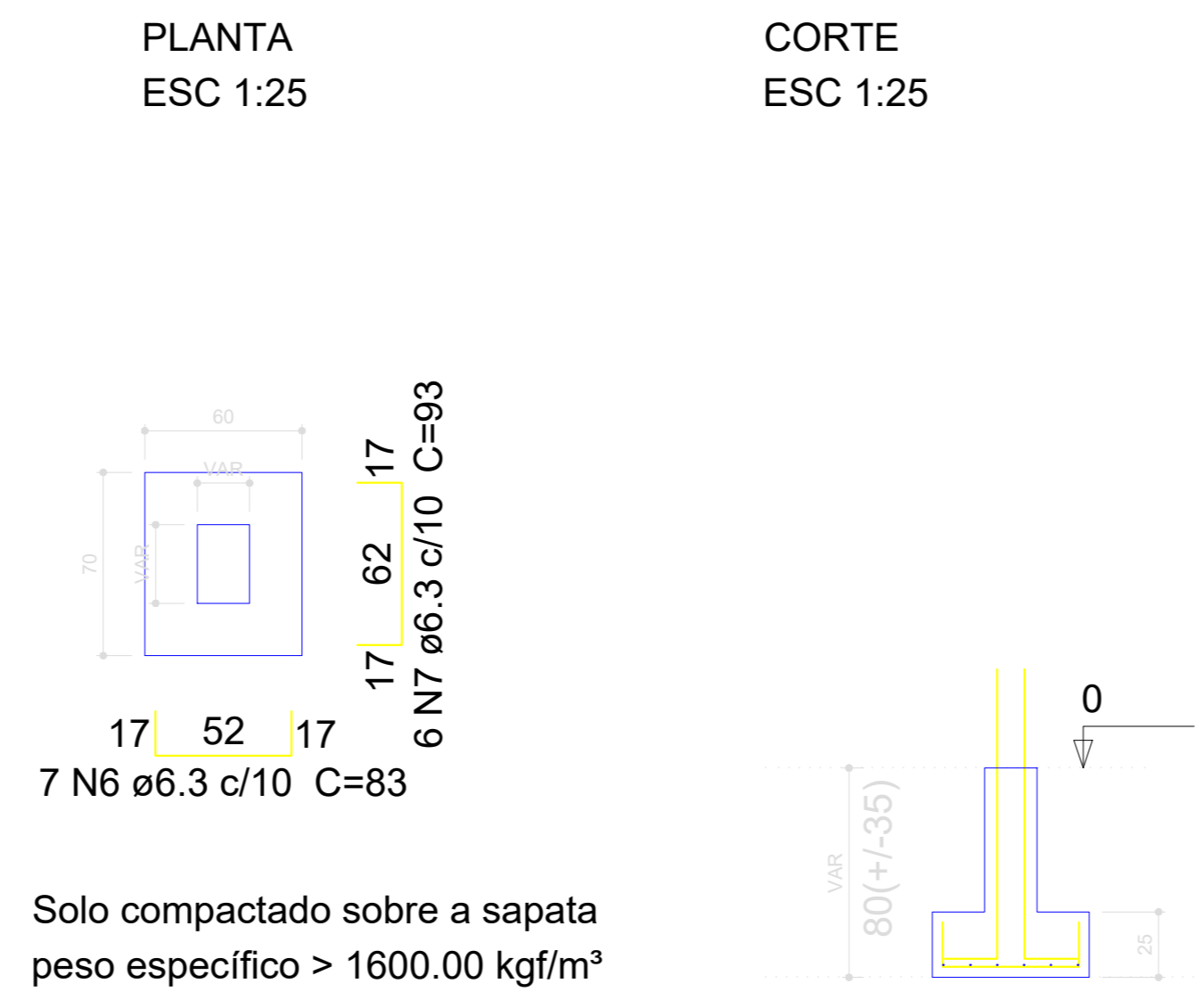
P14=P21=P31=P37



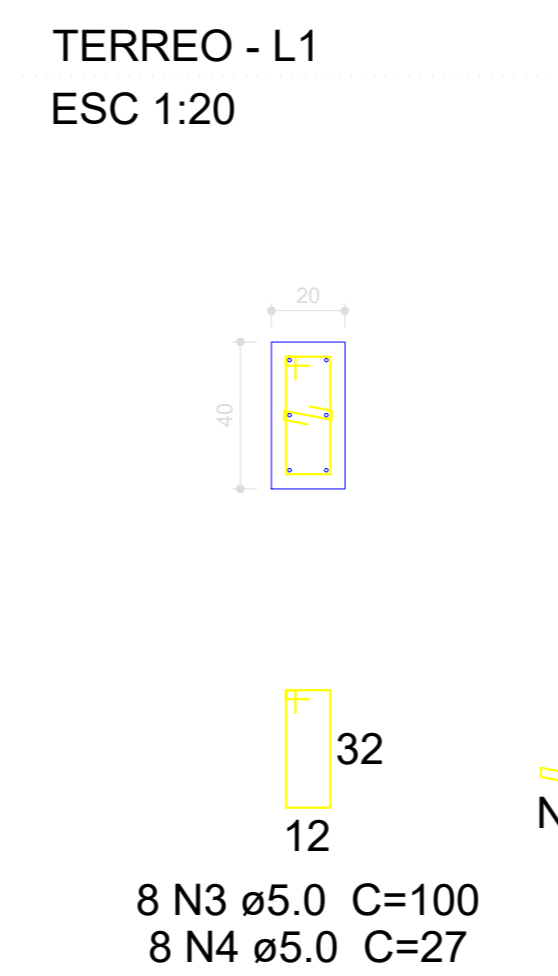
P27=P28



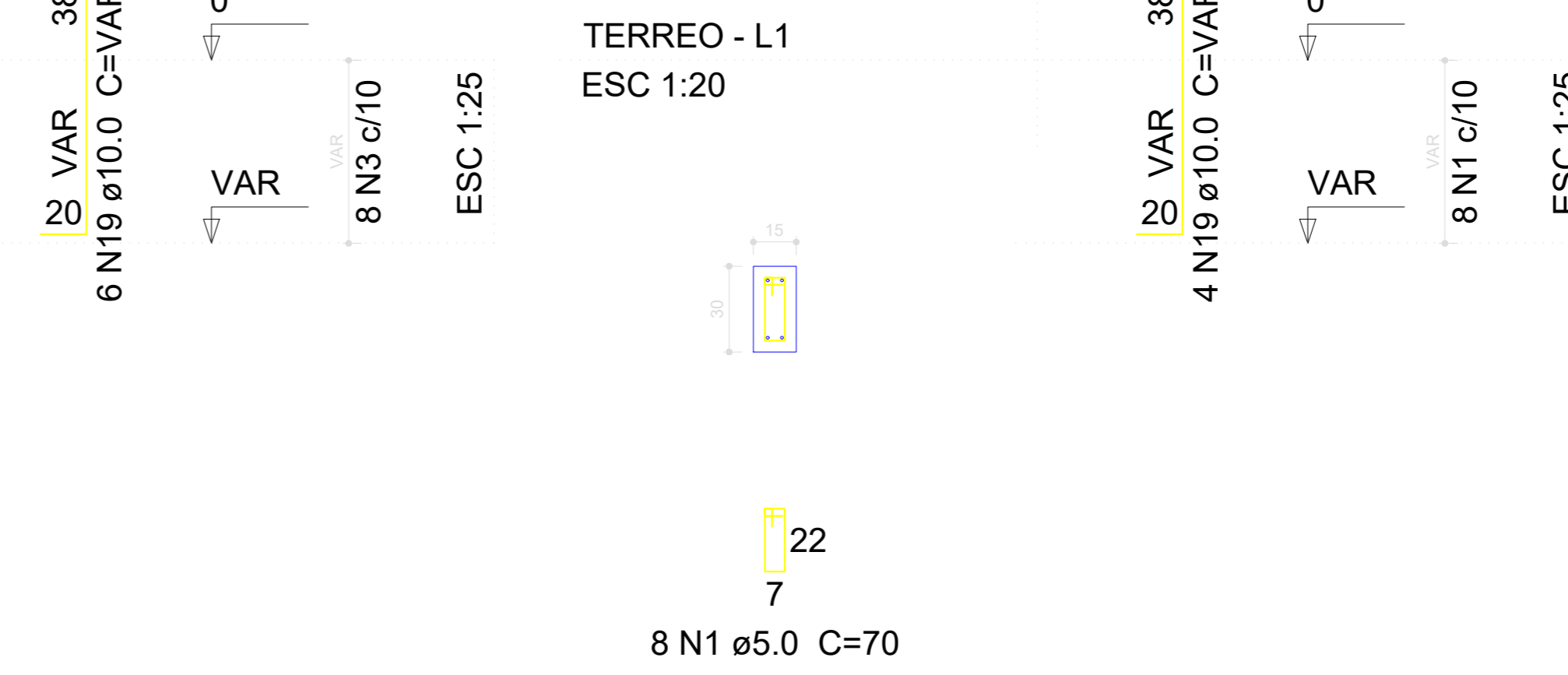
S14=S21=S27=S28=S31=S37



P24



P30



Relação do aço

2xP1	2xP7	P9
4xP10	4xP14	2xP17
P24	P25	P26
2xP27	P29	P30
P33	P34	2xP35
2xS7	2xS11	3xS17
4xS19	3xS25	6xS27
2xS30	S34	3xS35

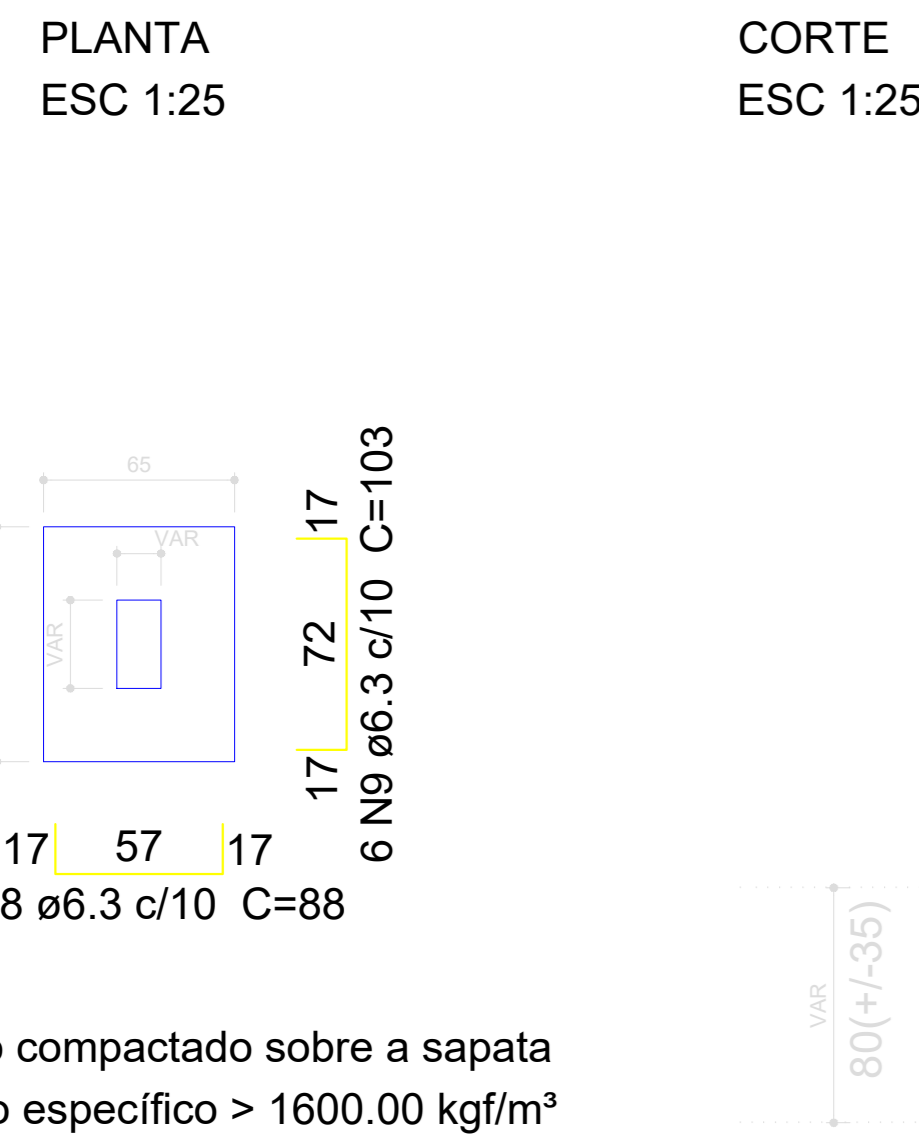
AÇO	N	DIAM (mm)	QUANT (Barras)	UNIT (cm)	C.TOTAL (cm)
CA60	1	5.0	114	70	7980
	2	5.0	24	80	1920
	3	5.0	48	100	4800
	4	5.0	48	27	1296
	5	5.0	16	80	1280
CA50	6	6.3	42	83	3486
	7	6.3	60	93	5580
	8	6.3	16	88	1408
	9	6.3	12	103	1236
	10	6.3	57	108	6156
	11	6.3	38	98	3724
	12	6.3	46	113	5198
	13	6.3	24	123	2952
	14	6.3	30	128	3840
	15	6.3	26	98	2548
	16	6.3	20	113	2260
	17	6.3	52	128	6656
	18	8.0	44	107	4708
	19	10.0	106	VAR	VAR
	20	12.5	20	VAR	VAR

Resumo do aço

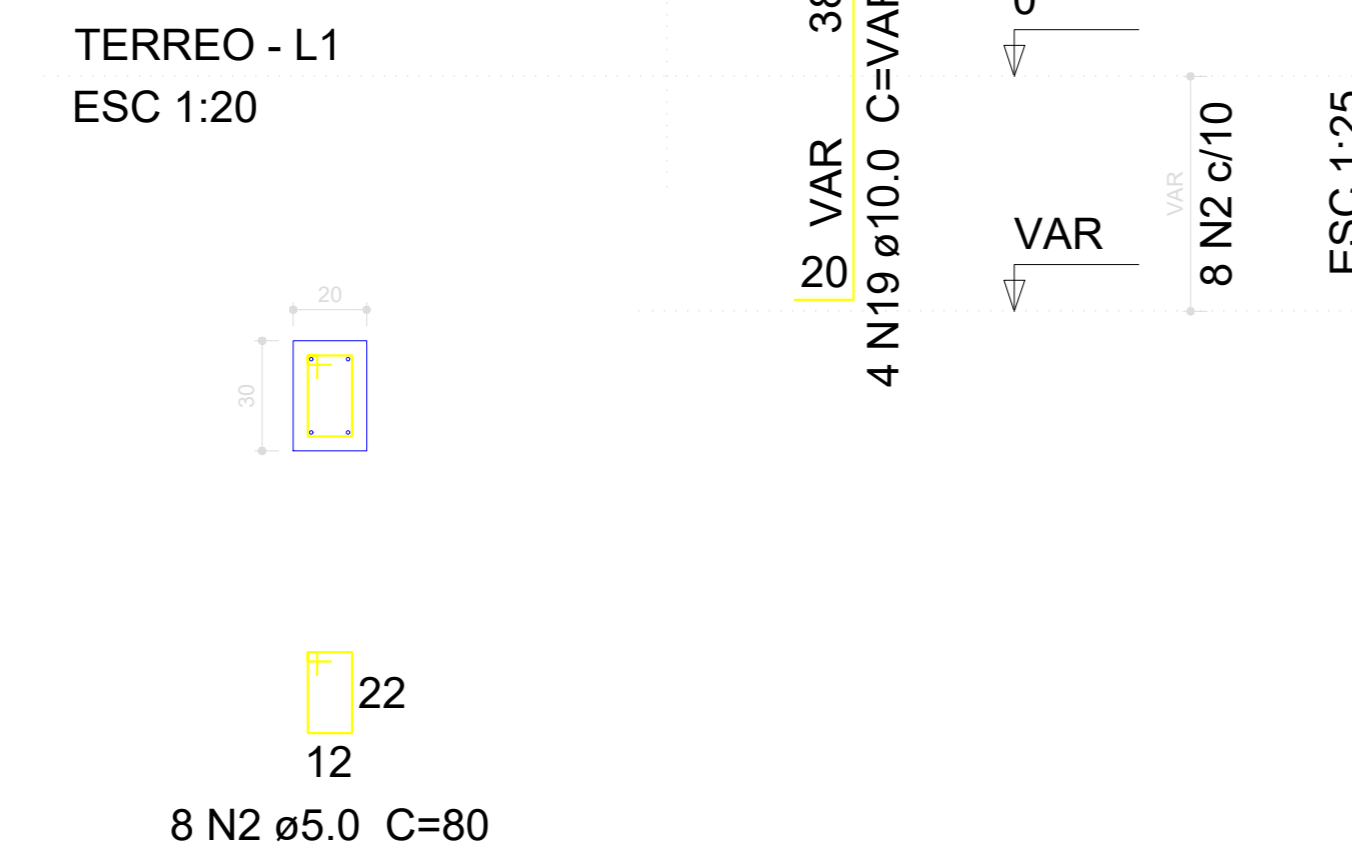
AÇO	DIAM (mm)	C.TOTAL (m)	PESO + 10% (kg)
CA50	6.3	450.5	121.2
	8.0	47.1	20.4
	10.0	144.2	97.8
	12.5	28.8	30.5
CA60	5.0	172.8	29.3
PESO TOTAL (kg)			
CA50	270		
CA60	29.3		

Volume de concreto (C-25) = 1.17 m³
 Volume de concreto (C-20) = 4.71 m³
 Área de forma = 40.25 m²

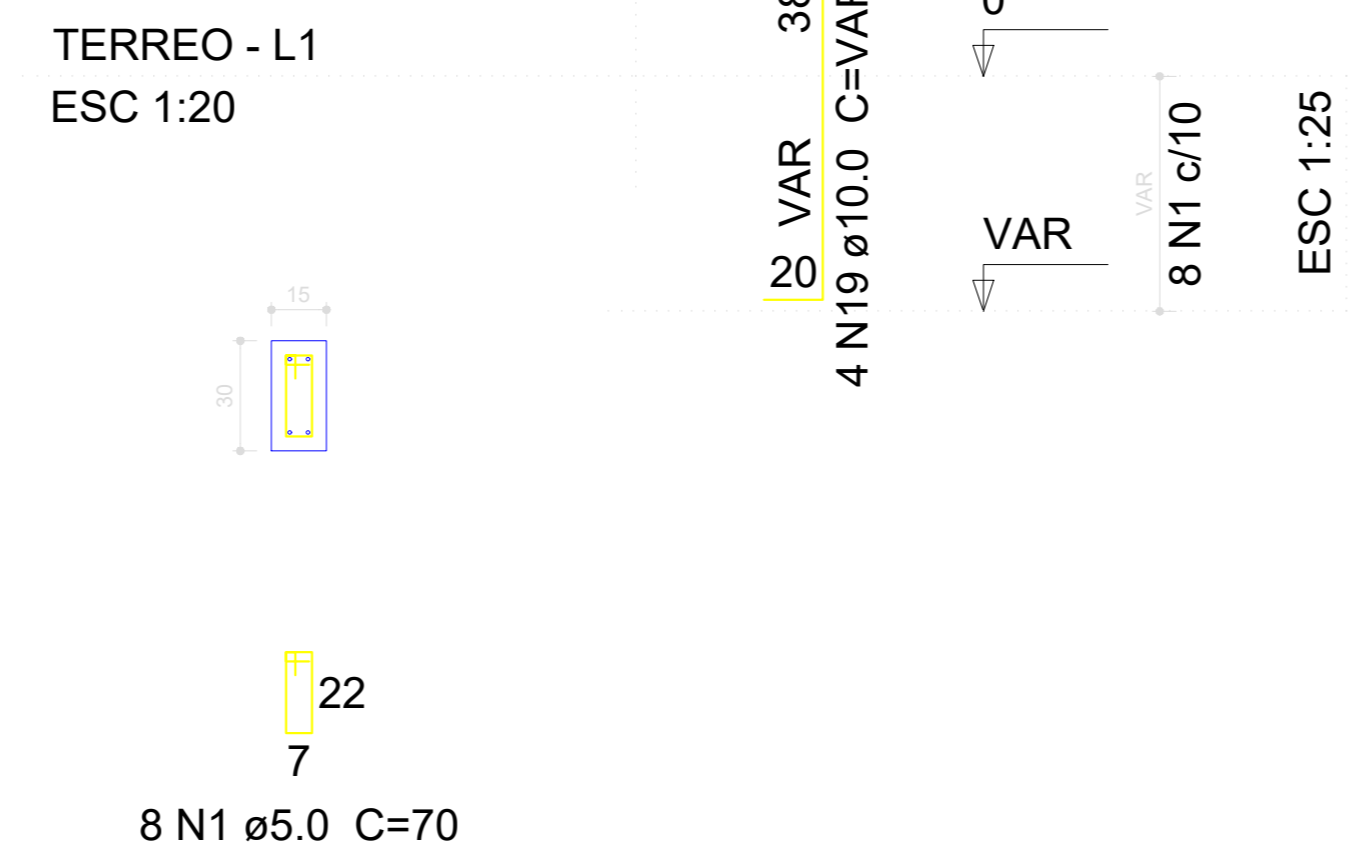
S24=S30



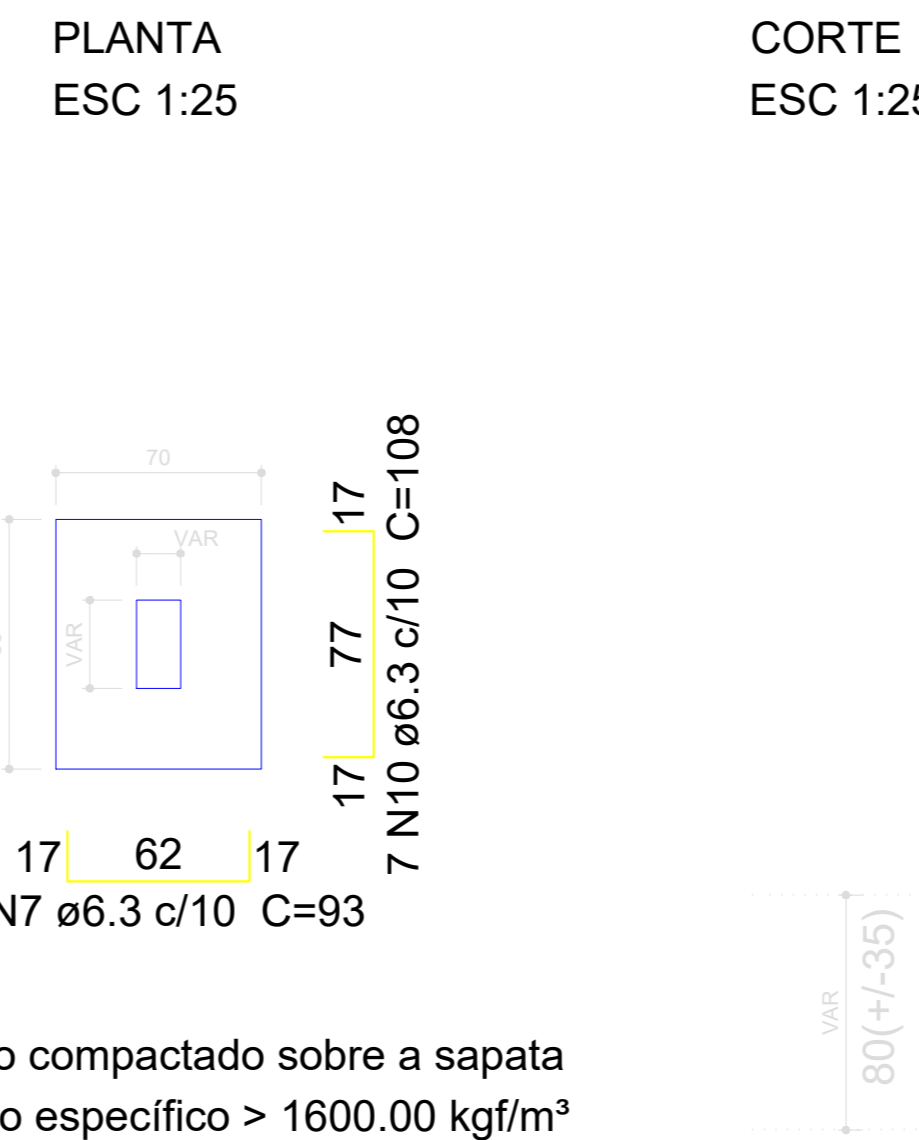
P29



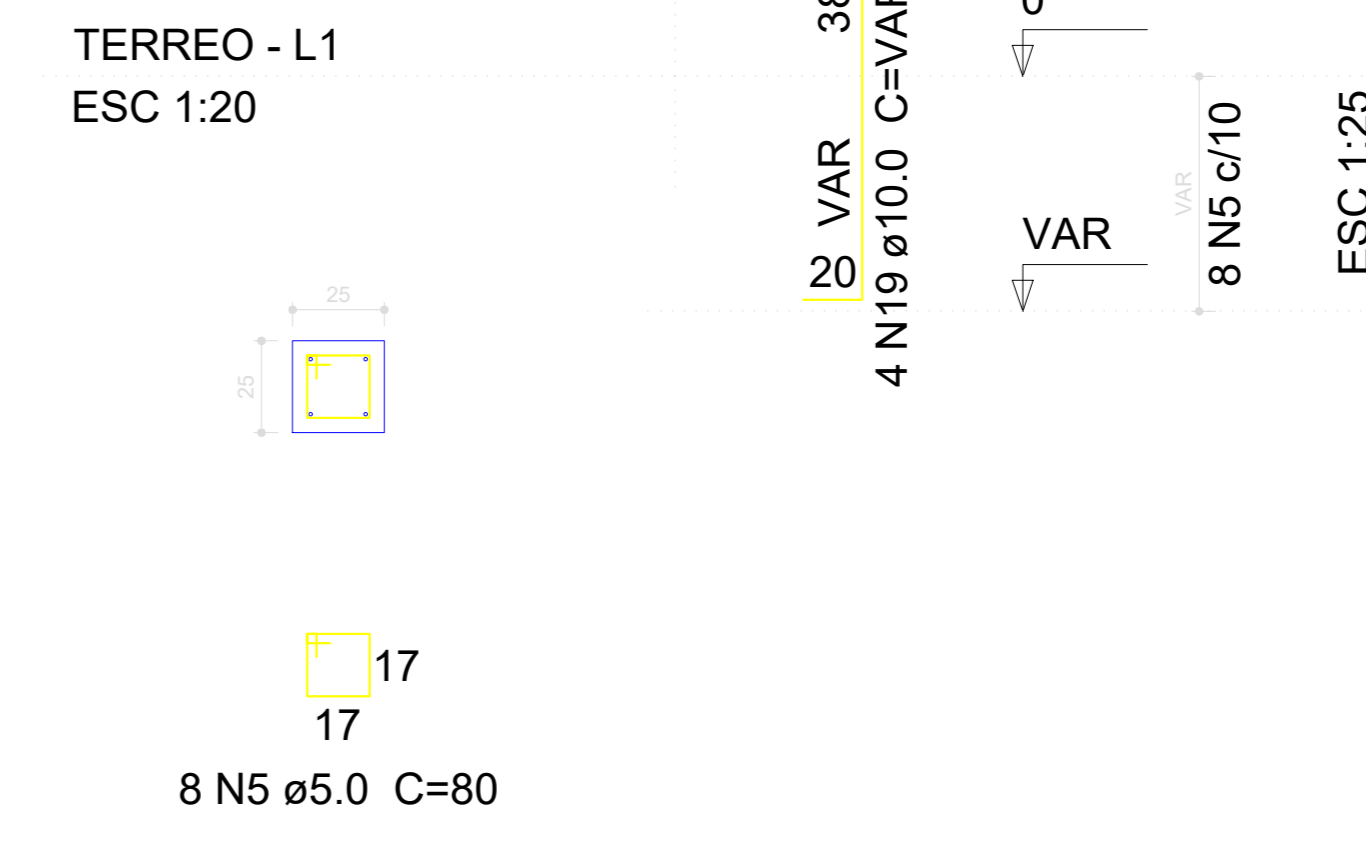
P35=P36



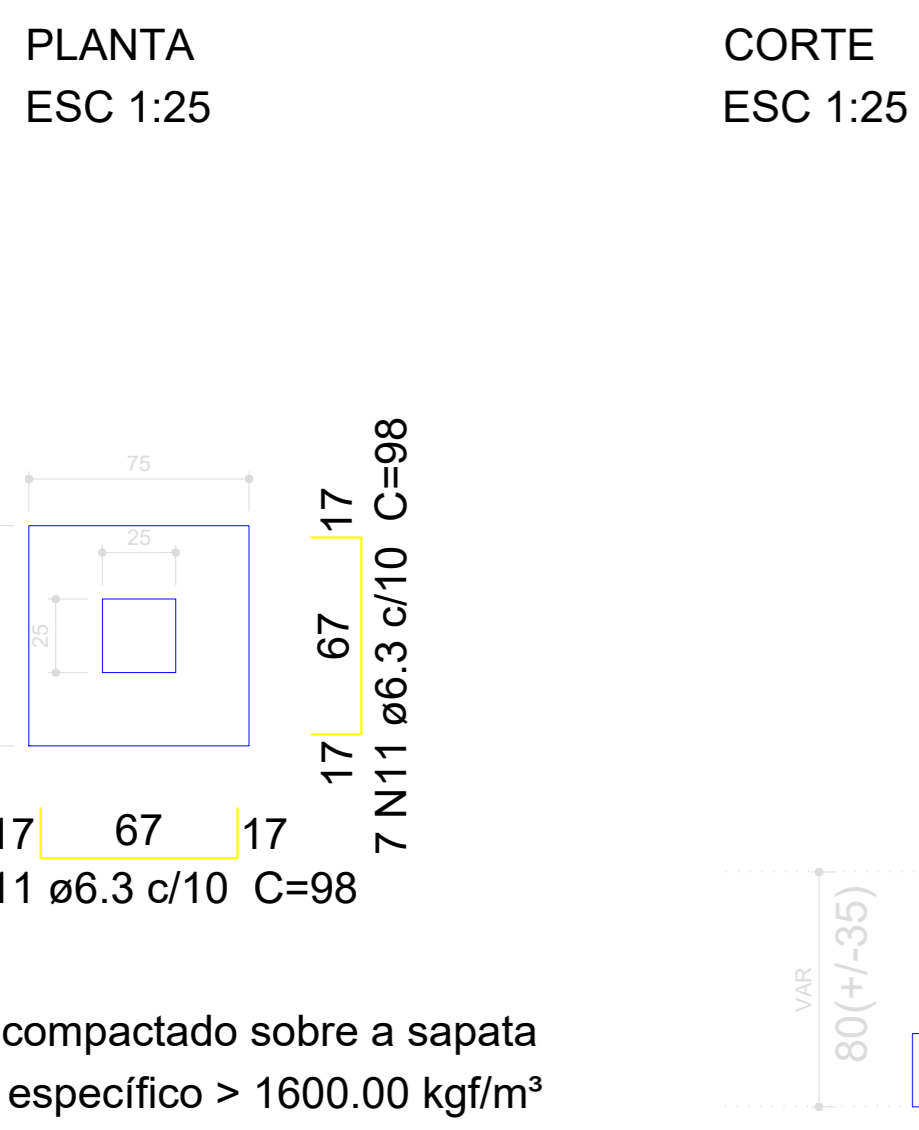
S29=S35=S36



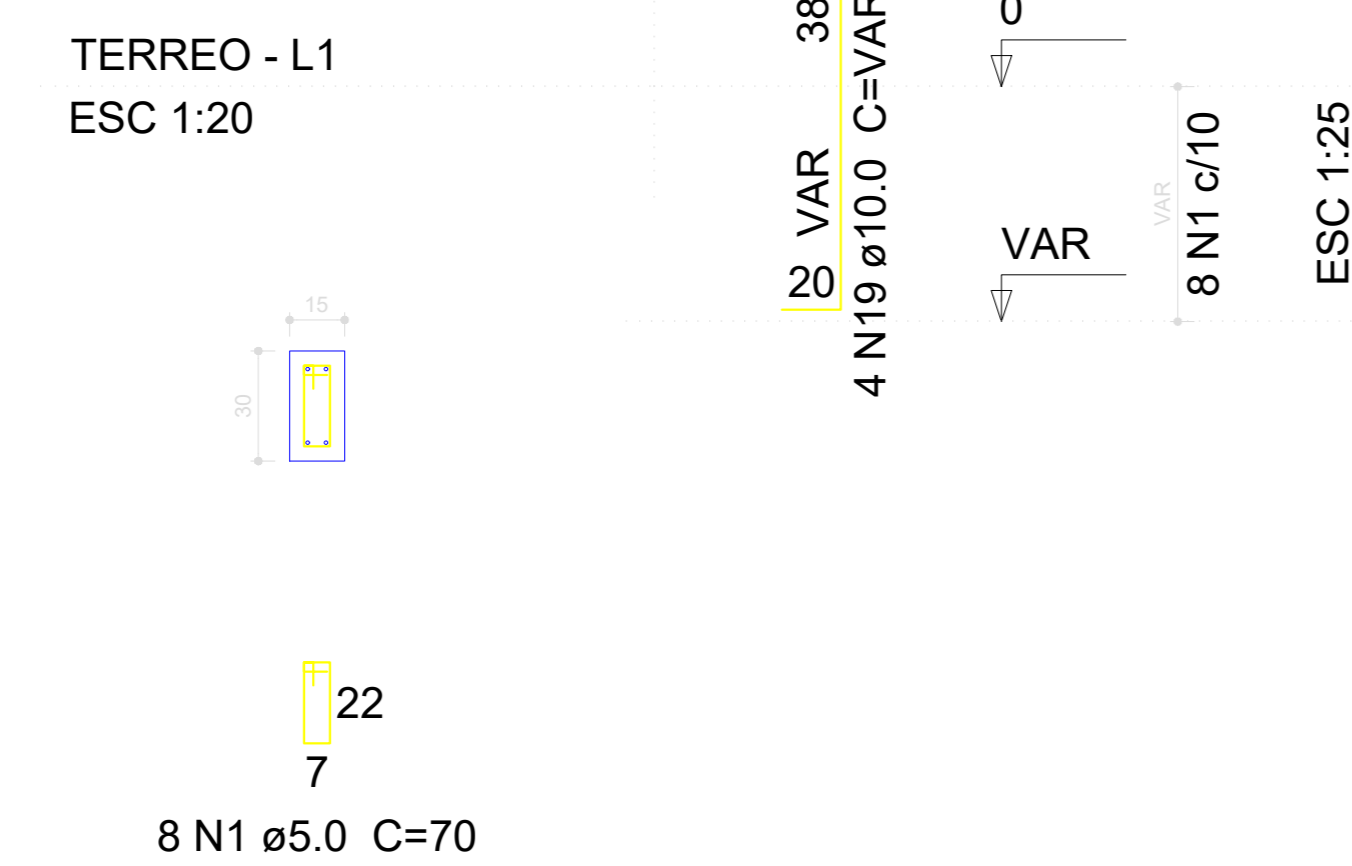
P1=P11



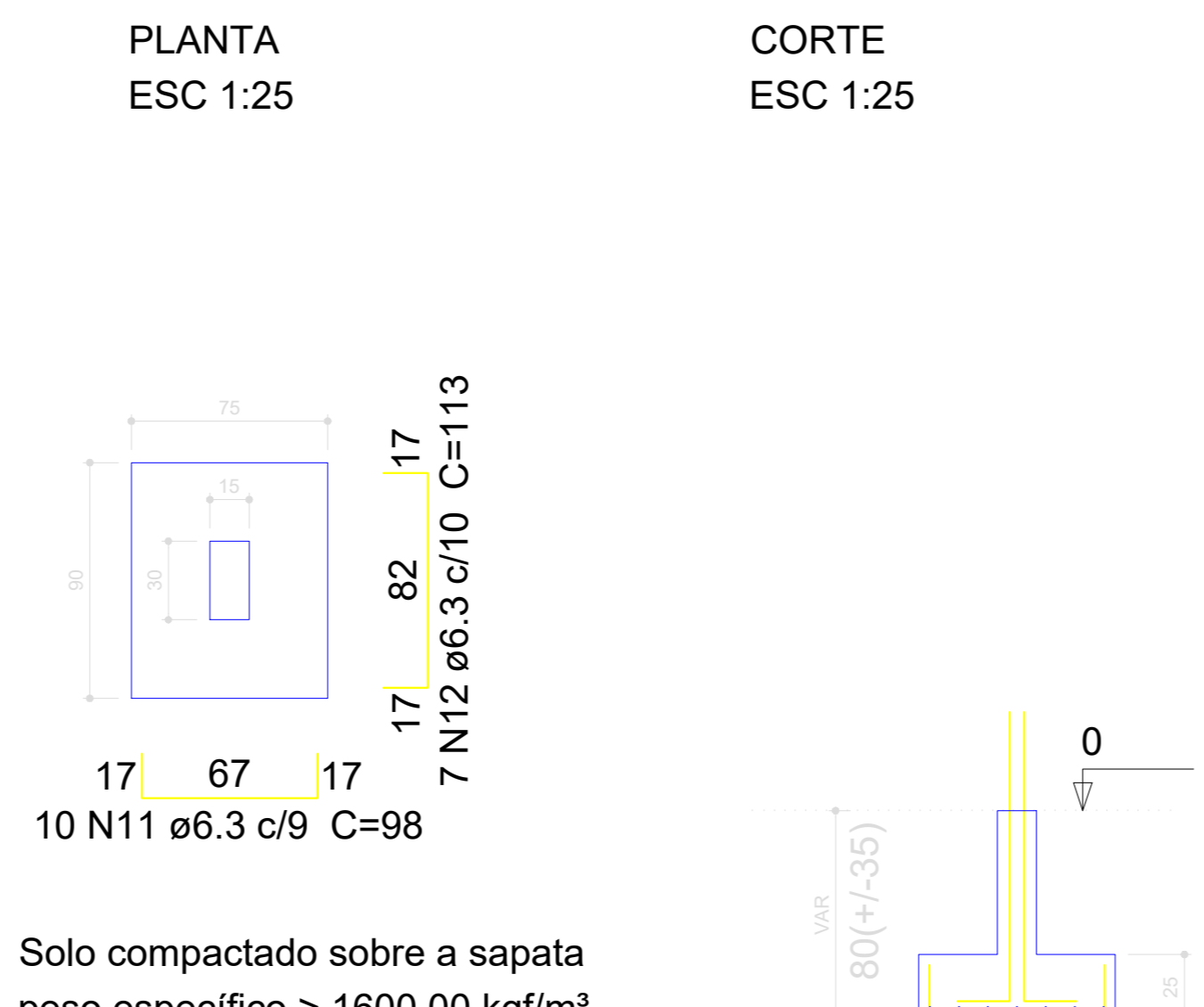
S1=S11



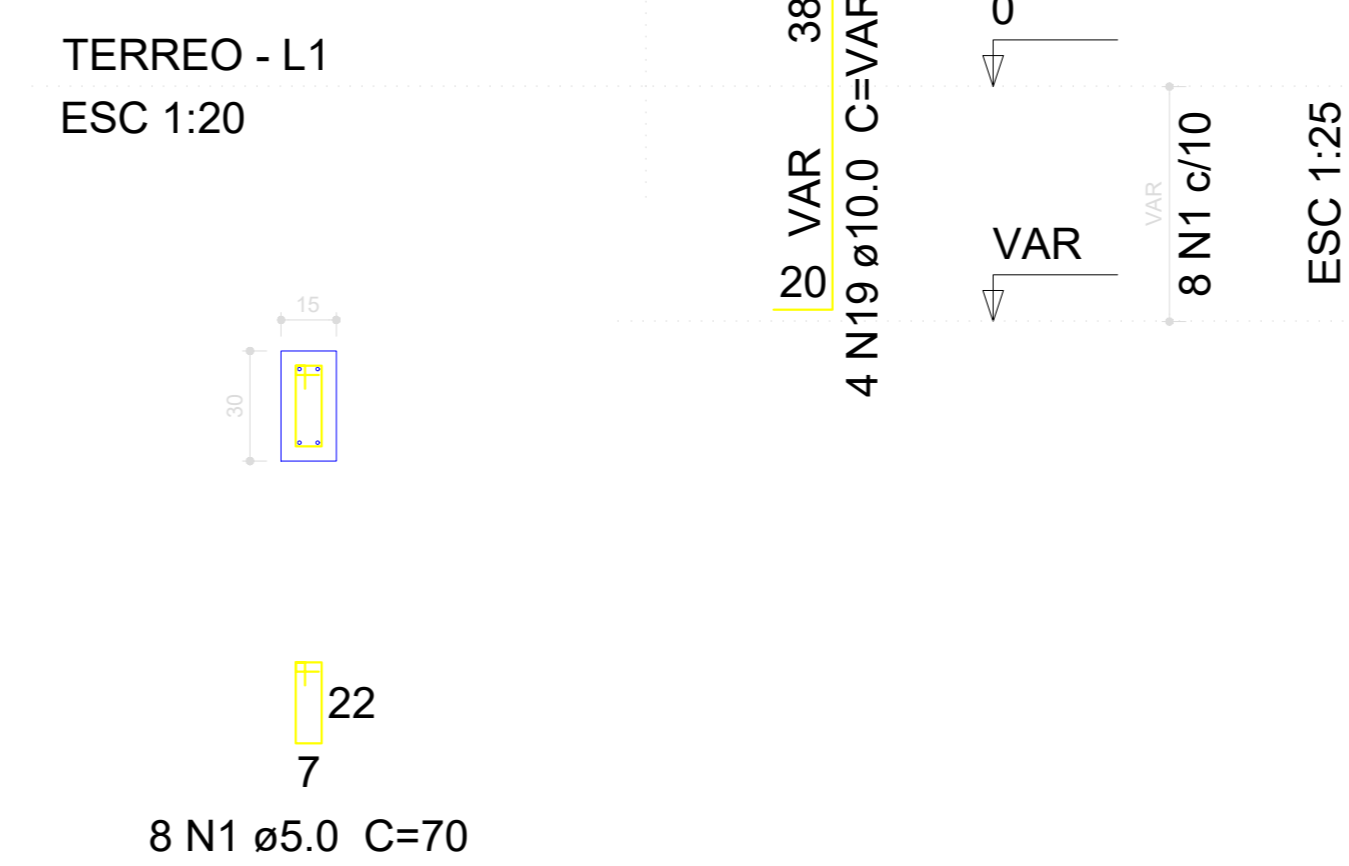
P34



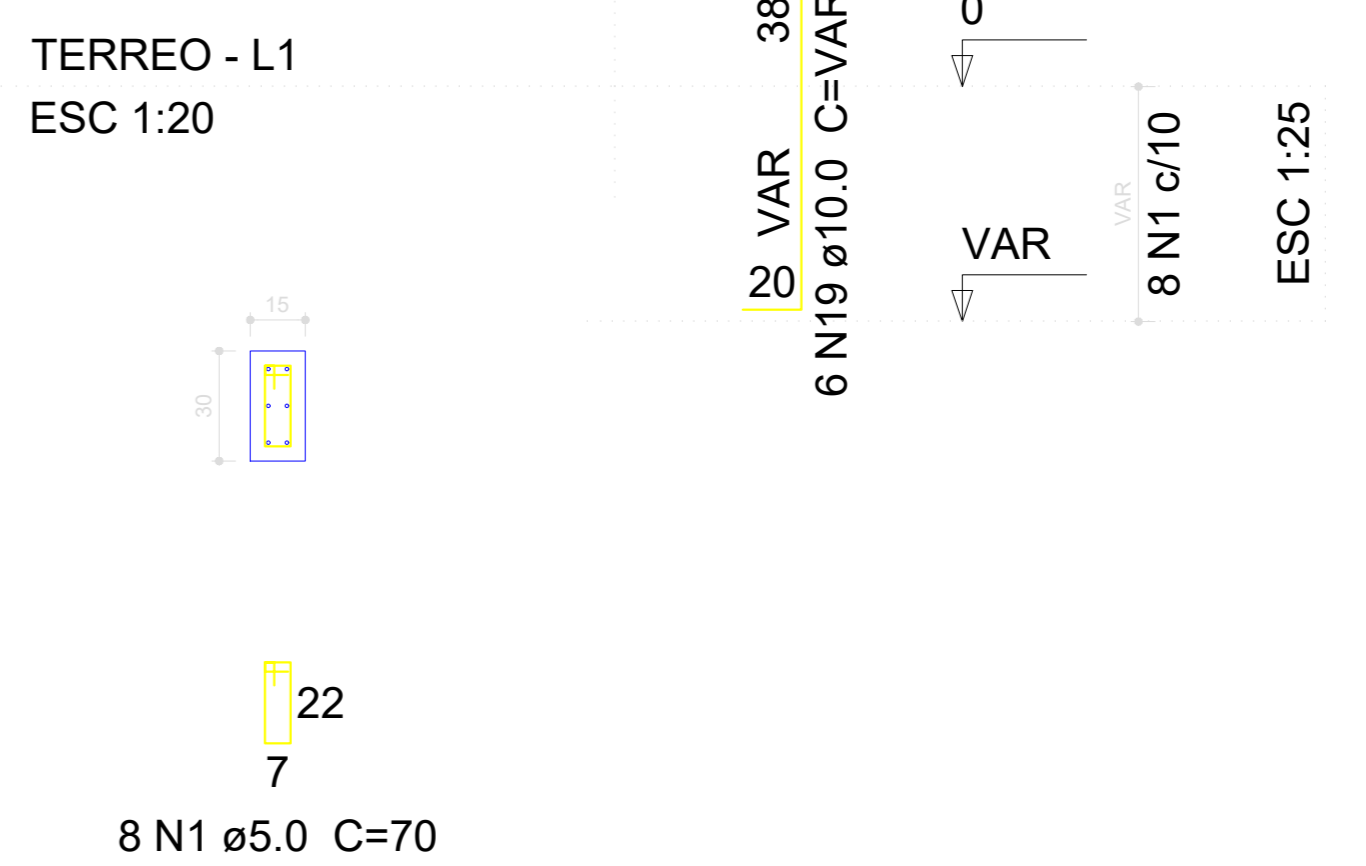
S34



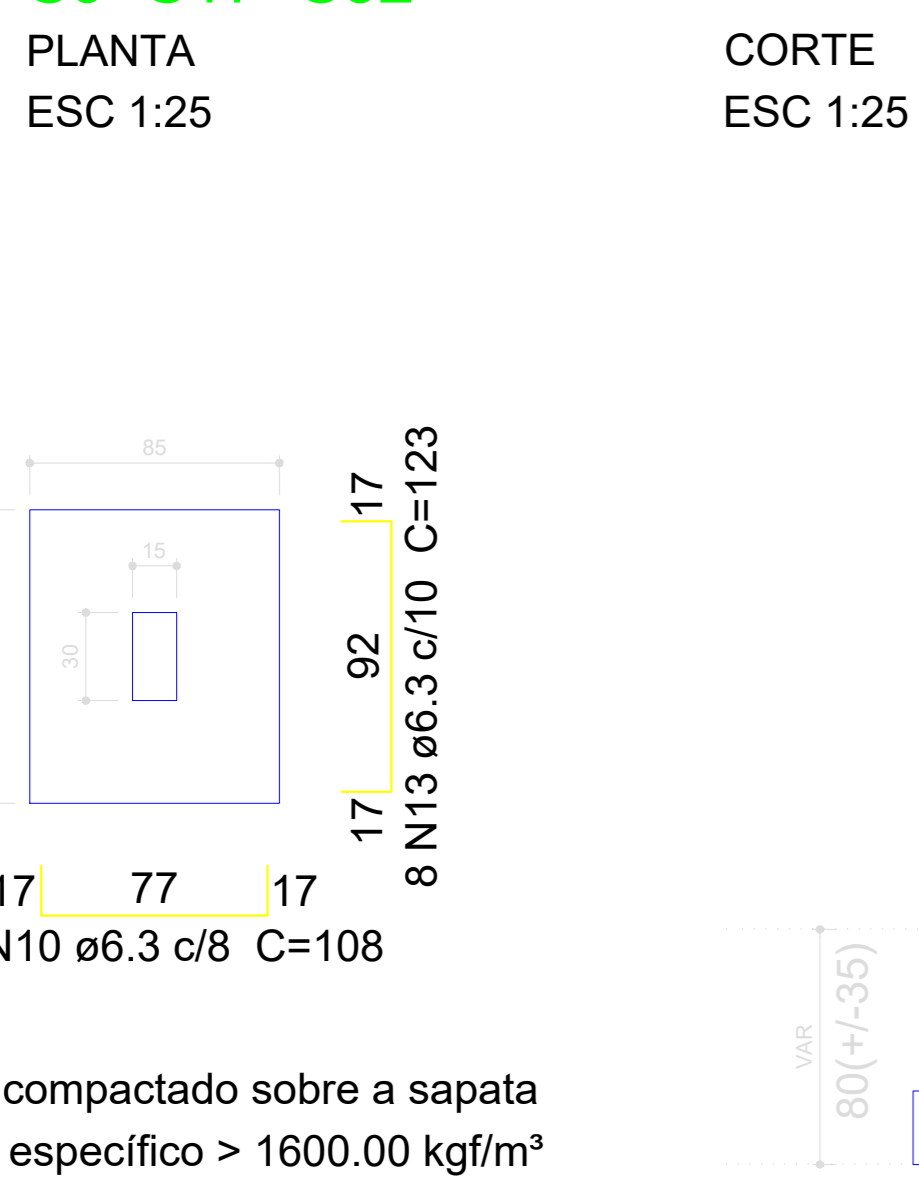
P17=P32



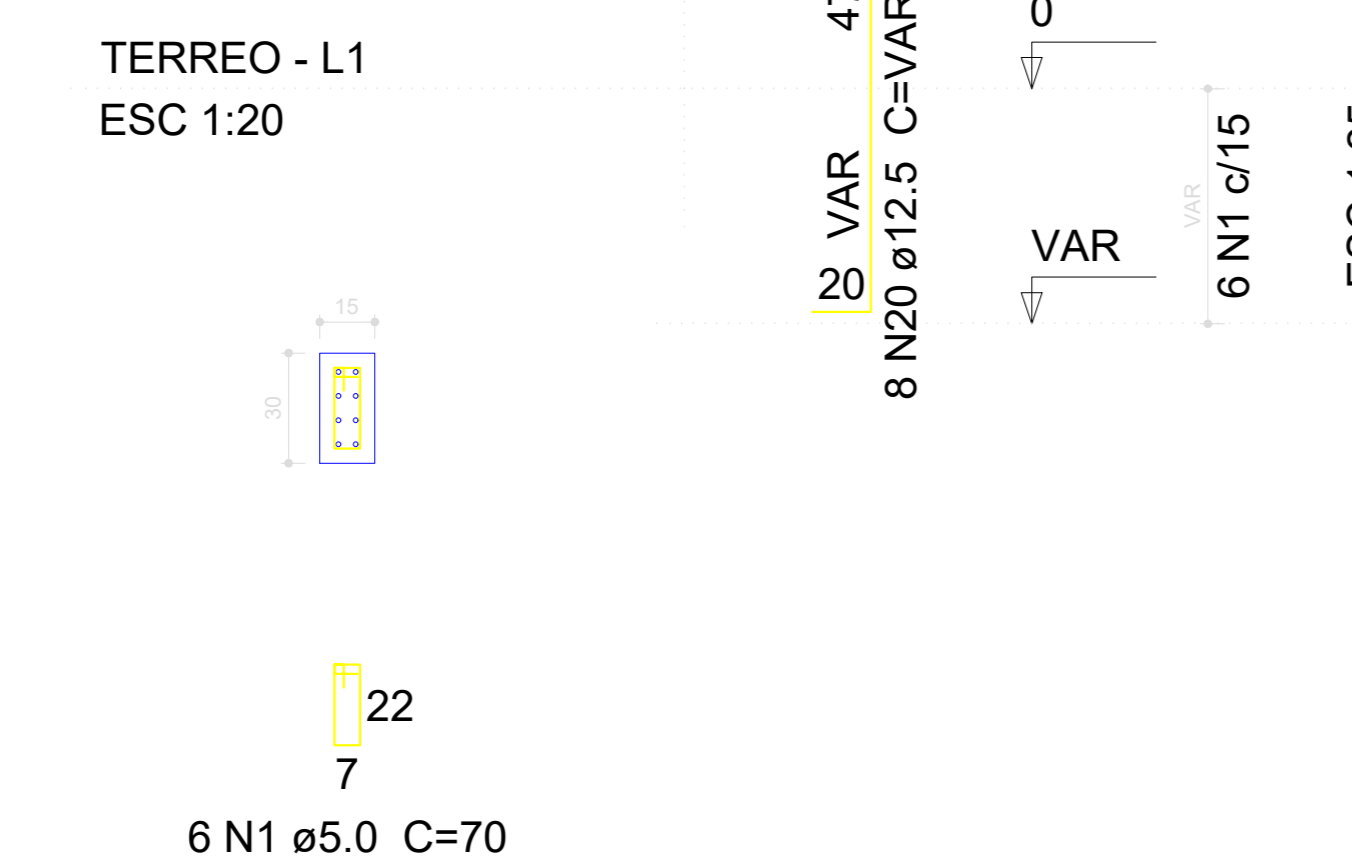
P9



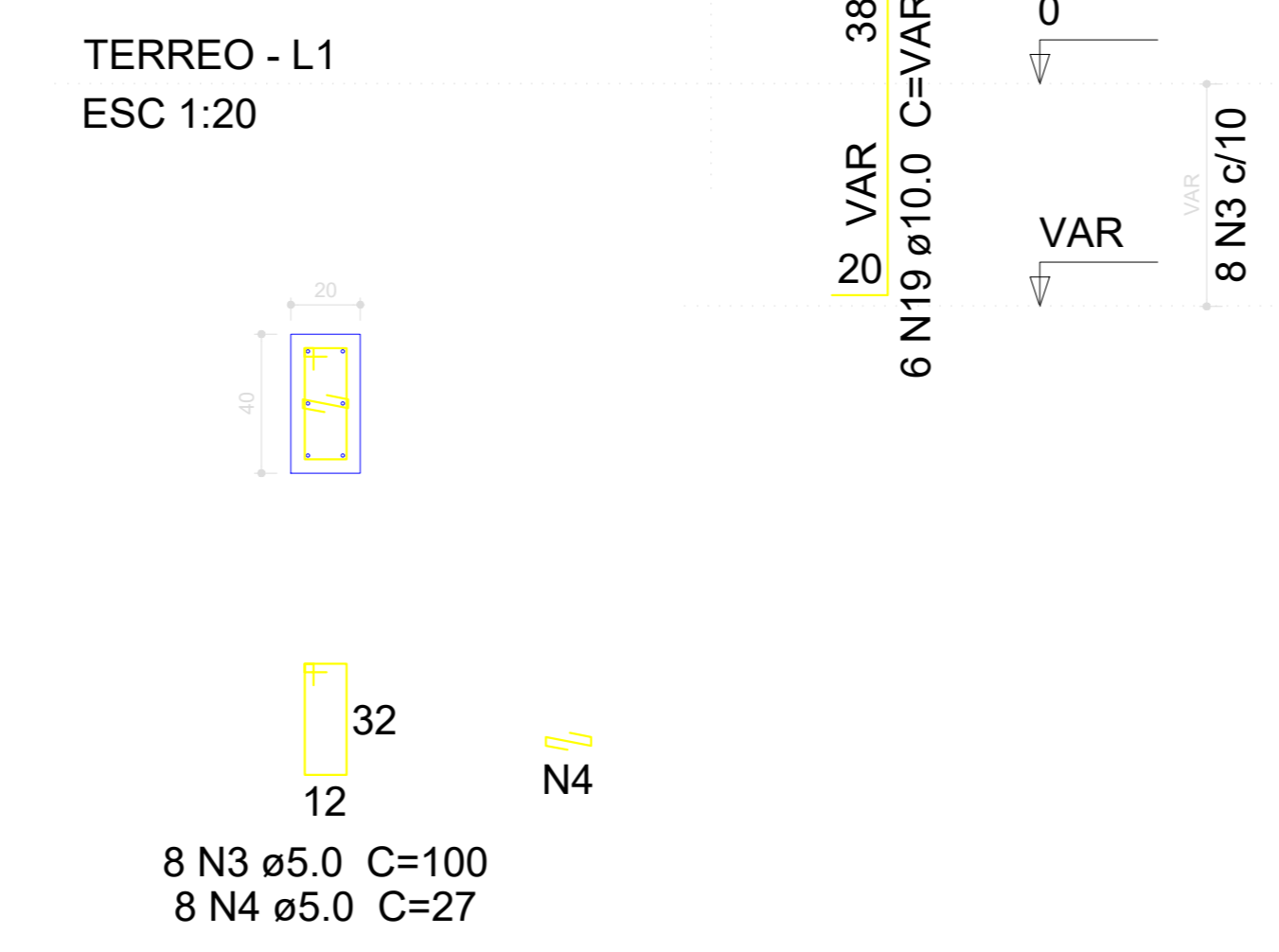
S9=S17=S32



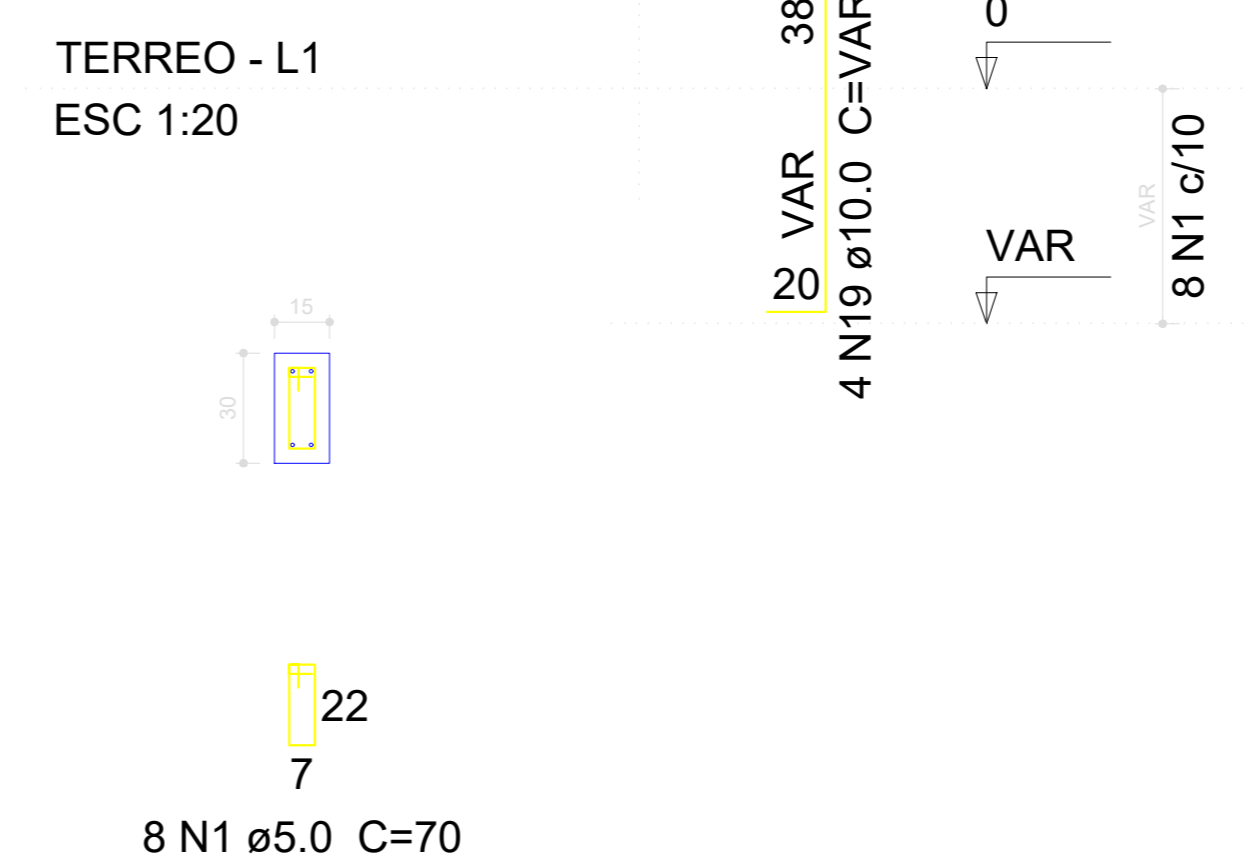
P25



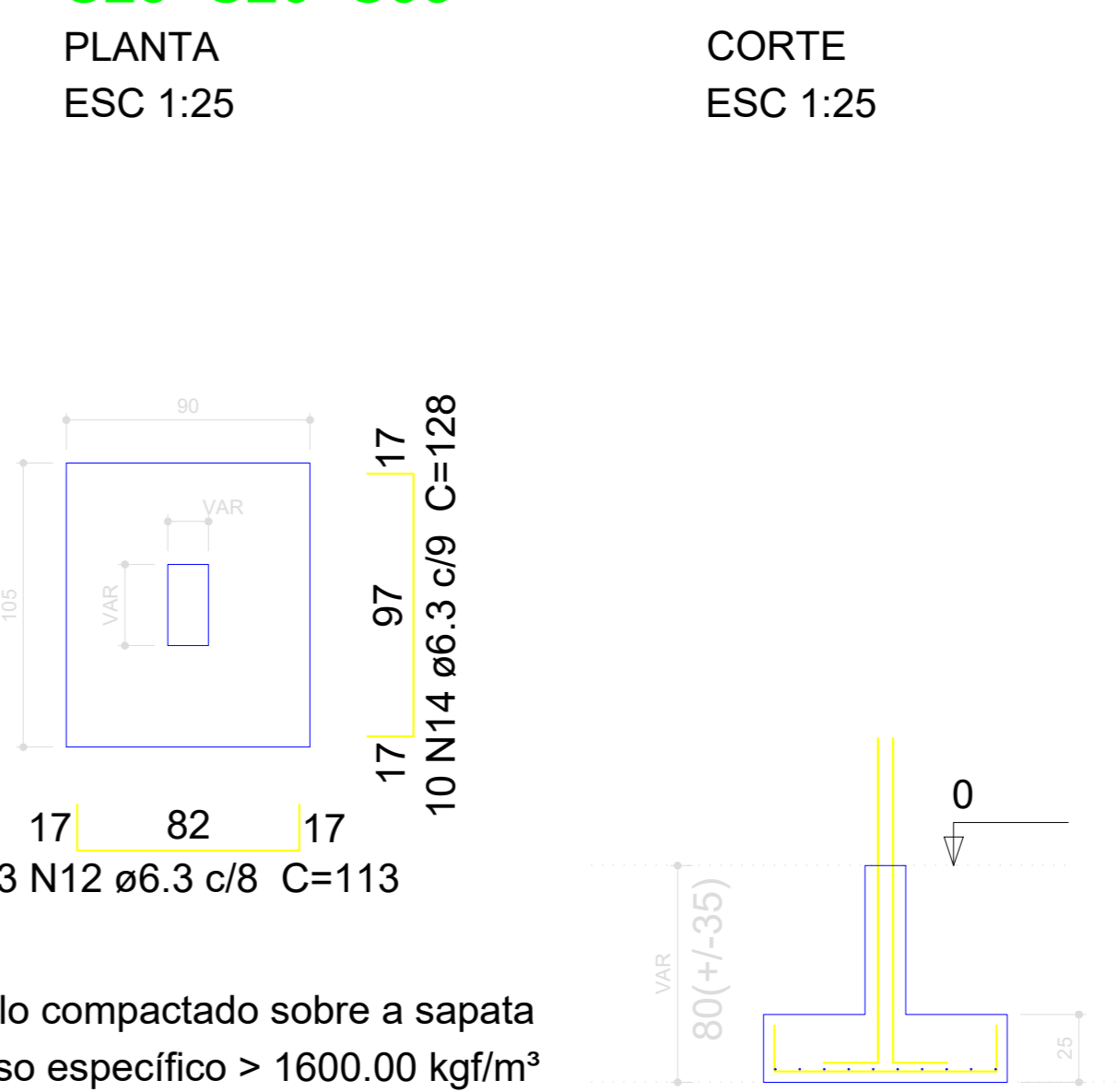
P26



P33



S25=S26=S33



Luiz Carlos Schumler
PREFEITO

Antony N. Fernandes
RESPONSÁVEL TÉCNICO

PREFEITURA MUNICIPAL DE BOCAINA DO SUL

Reforma e Ampliação Creche Raulino Felipe dos Santos

Projeto estrutural, detalhamento das sapatas 1/2

Prefeito
Luiz Carlos Schumler

Responsável técnico
Eng. Antony N. Fernandes

escalas:
Indicadas

CREA nº
136779-8

Prancha nº
06/09